

Business Park De Hoef revisited 1998-2008

Arjan Harbers (Topotronic)

In the winter of 1998, I photographed every single building of Business Park De Hoef in Amersfoort as reference for a study to redevelop the business park into a mixed-use urban area. In winter 2008, ten years later, I revisited the site and saw that none of my proposals were realized: It still is a monofunctional urban zone.

I was curious about the changes that had occurred in the business park in the meantime. What would office buildings and industrial sheds - having an average economic life cycle of fifteen years - look like after ten years? Were they run down? Were the buildings flexible enough to have more floors or extensions added to them? In what way did the public space change? Would cars still have enough space to park? How many firms changed their names or went bankrupt? I decided to photograph every single building again from the same angle as ten years earlier.

The most significant changes were that one building (the post office) had been demolished and replaced by another building, and that the vacant plots along the highway had been urbanized by now.

PHOTO INDEX

27-02-98

Titel: 00000000



2-20-41-18-36-33-30-3000-27114147--11-45--02 212-232-0

PHOTO INDEX

27-02-98

Titel:



DSC09344.JPG

DSC09343.JPG

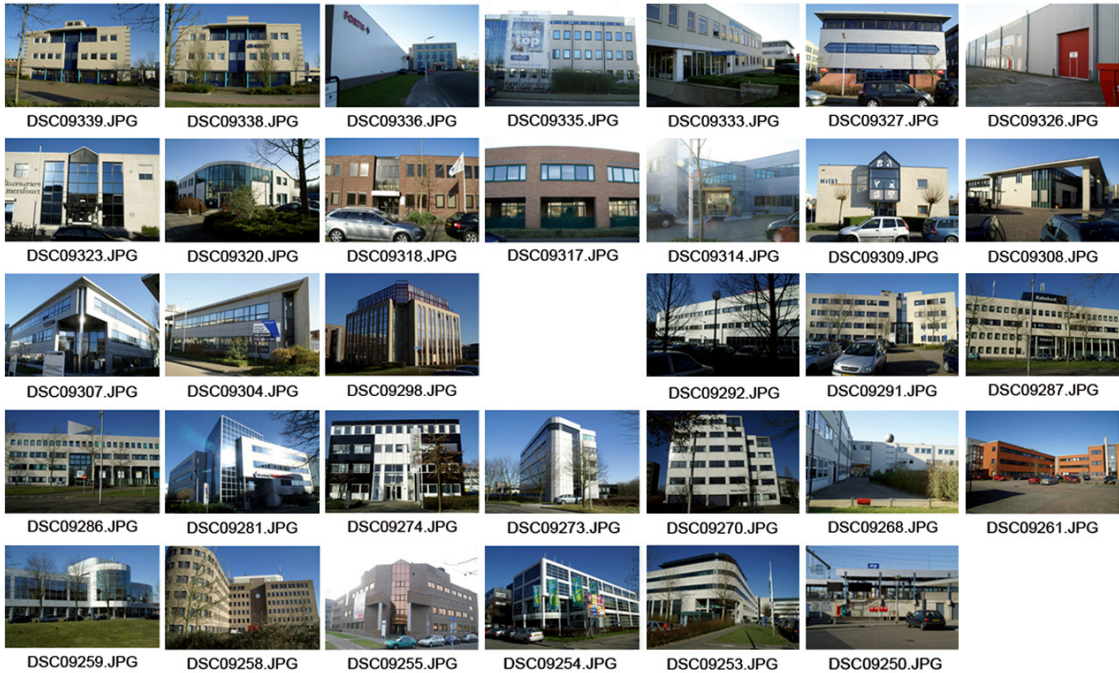


Image 32A/DSC09336.JPG: Generale Bank became Fortis, in 2010; Fortis Bank Nederland

Image 29A/DSC09327.JPG: This building had one floor added to it.

Image 14A/DSC09287.JPG: Libertel was taken over by Vodaphone, Rabobank took over Libertel's office building and had it painted.

Image 13A/DSC09286.JPG: Origin became Atos Origin. The building was subdivided into smaller units.

Image 6A/DSC09259.JPG: Sun moved out. Trees have grown however.

Image 3A/DSC09254.JPG: De Boer Unigro became Super de Boer, now for rent. The building next door was completed.

PHOTO INDEX

27-02-98

Titel: 00000000



2-20-41-18-36-33-30-3000-27114147-11-45-02 212-233-0

PHOTO INDEX

27-02-98

Titel:



DSC09429.JPG

DSC09427.JPG



DSC09426.JPG

DSC09425.JPG

DSC09424.JPG

DSC09420.JPG

DSC09419.JPG

DSC09414.JPG

DSC09413.JPG



DSC09411.JPG

DSC09409.JPG

DSC09406.JPG

DSC09404.JPG

DSC09403.JPG

DSC09397.JPG

DSC09396.JPG



DSC09395.JPG

DSC09394.JPG

DSC09393.JPG

DSC09391.JPG

DSC09390.JPG

DSC09386.JPG

DSC09385.JPG



DSC09384.JPG

DSC09383.JPG

DSC09380.JPG

DSC09377.JPG

DSC09374.JPG

DSC09370.JPG

DSC09367.JPG



DSC09365.JPG

DSC09364.JPG

DSC09361.JPG

DSC09360.JPG

DSC09359.JPG

DSC09341.JPG

Image 28A/DSC09413.JPG:
After ABB moved out, the new user built an entrance wing in the same style as the main building.

Image 22A/DSC09397v.JPG:
A new floor, a new facade, and a new entrance

Image 15A/DSC09386.JPG:
This building was painted black and blue. The flagpole on the roof was replaced by flagpoles in the parking lot.

Image 7A/DSC09367.JPG: For rent in 1998; for rent in 2008.

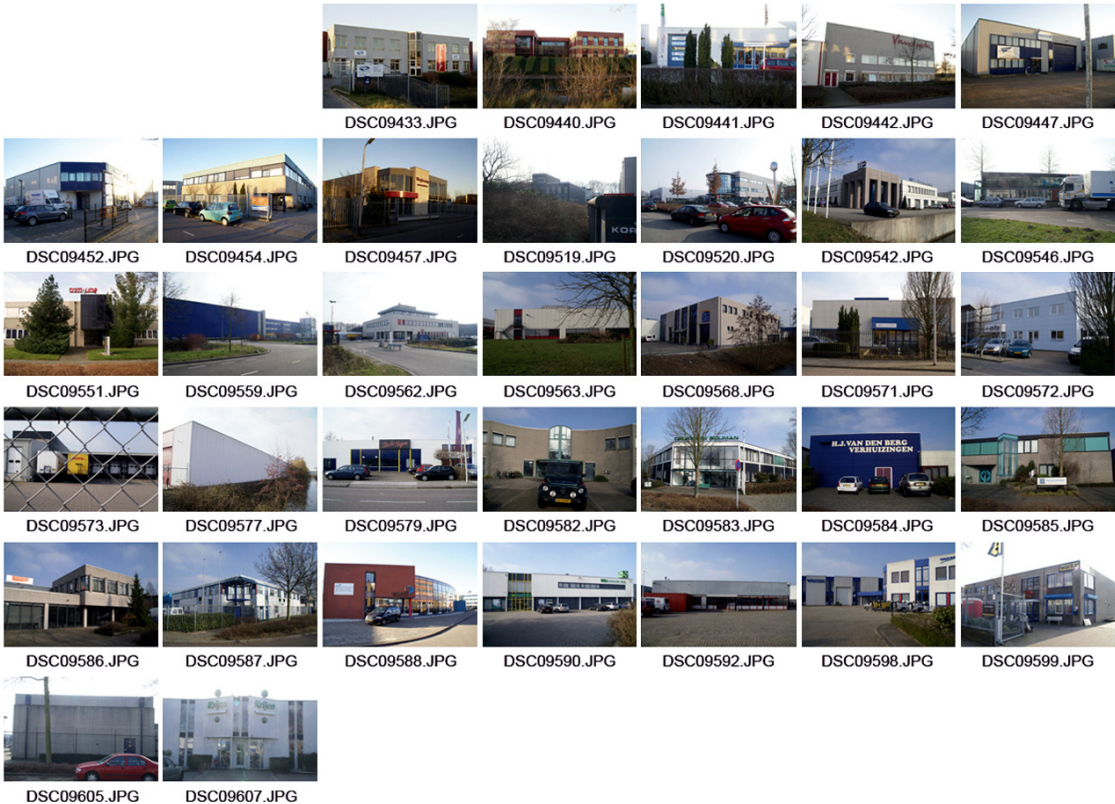


Image 13/DSC09542.JPG:
Advertisements have been
installed on the roofs of the
buildings.

Arjan Harbers is an urban planner and researcher. In addition to Topotronic, he works for The Netherlands Environmental Assessment Agency (PBL).

Topotronic is a Rotterdam based office for urban planning, urban design and urban research. Topotronic is specialized in mixed-use urban planning and research on borderscapes. Currently Topotronic is working on comparative research on traffic jams in Switzerland and the Netherlands. (www.topotronic.nl)